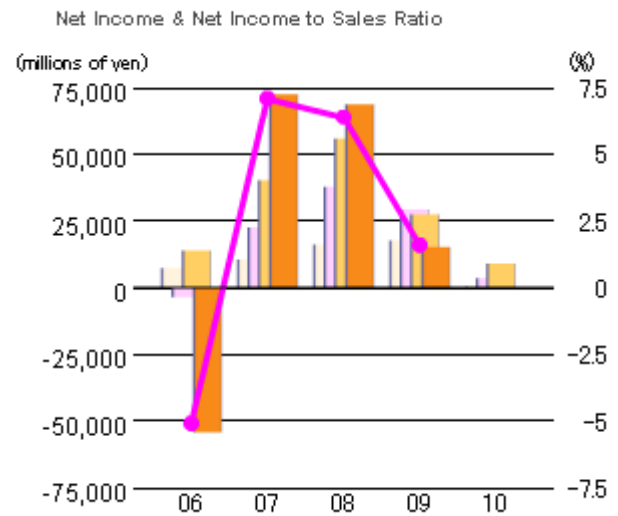
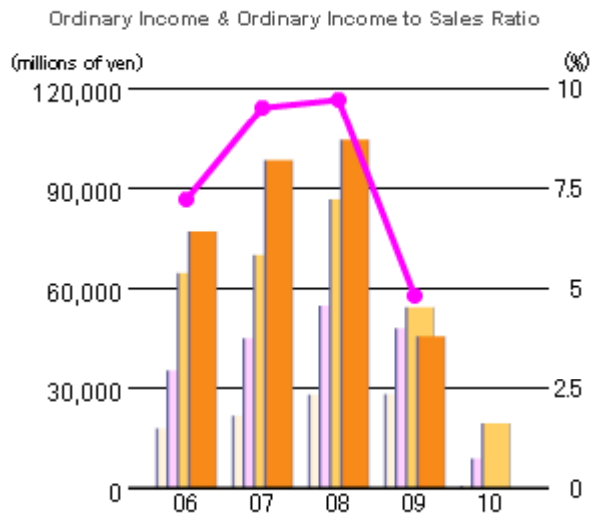
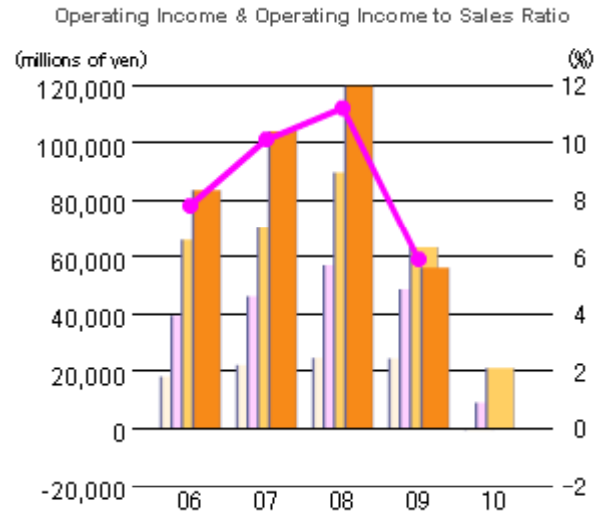
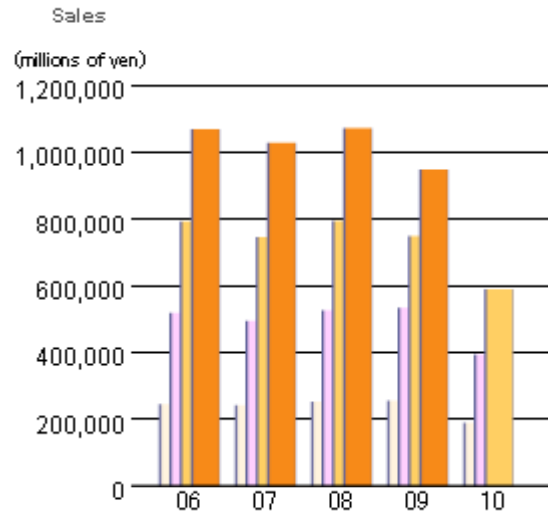
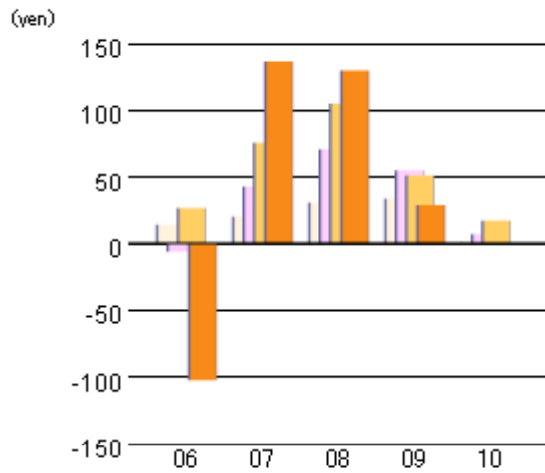


CONSOLIDATED FINANCIAL HIGHLIGHTS

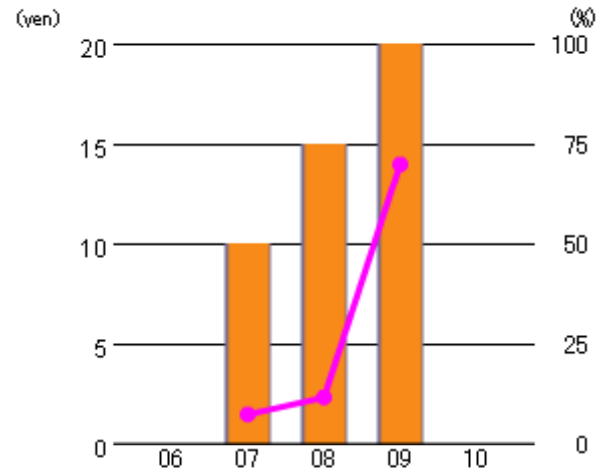


CONSOLIDATED FINANCIAL HIGHLIGHTS

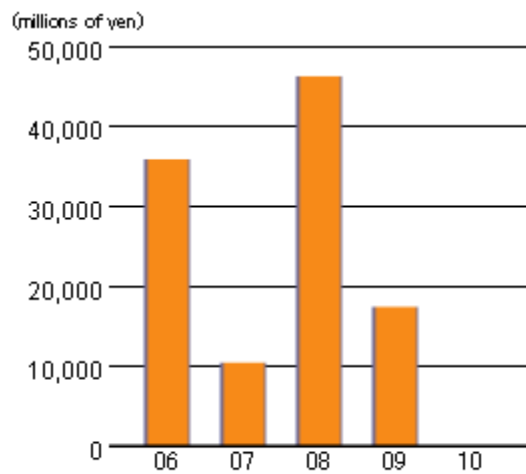
Earnings per Share



Cash Dividends per Share & Dividend Payout Ratio



Free Cash Flow



CONSOLIDATED FINANCIAL HIGHLIGHTS

		2006/3	2007/3	2008/3	2009/3	2010/3
Sales (millions of yen)	Full Year	1,068,390	1,027,630	1,071,568	947,843	
	3rd Quarter (total)	793,016	744,596	794,964	746,632	588,731
	Interim (total)	517,598	493,950	524,958	532,971	393,341
	1st Quarter	244,023	241,272	252,407	255,139	189,439
Operating Income (millions of yen)	Full Year	83,415	104,006	119,606	56,260	
	3rd Quarter (total)	66,045	70,345	89,577	63,385	21,203
	Interim (total)	39,408	46,260	57,059	48,670	9,159
	1st Quarter	18,183	22,240	24,735	24,478	-589
Operating Income Ratio (%)	Full Year	7.8	10.1	11.2	5.9	
	3rd Quarter (total)	8.3	9.4	11.3	8.5	3.6
	Interim (total)	7.6	9.4	10.9	9.1	2.3
	1st Quarter	7.5	9.2	9.8	9.6	-
Ordinary Income (millions of yen)	Full Year	76,838	98,099	104,227	45,403	
	3rd Quarter (total)	64,328	69,804	86,430	54,088	19,135
	Interim (total)	35,245	44,854	54,670	47,877	8,728
	1st Quarter	17,761	21,468	27,706	27,938	602
Ordinary Income Ratio (%)	Full Year	7.2	9.5	9.7	4.8	
	3rd Quarter (total)	8.1	9.4	10.9	7.2	3.3
	Interim (total)	6.8	9.1	10.4	8.9	2.2
	1st Quarter	7.3	8.9	11.0	11.0	0.3
Net Income (millions of yen)	Full Year	-54,305	72,542	68,829	15,179	
	3rd Quarter (total)	13,948	40,123	55,712	27,348	9,007
	Interim (total)	-3,482	22,508	37,644	29,279	3,534
	1st Quarter	7,316	10,555	16,135	17,628	299
Net Income Ratio (%)	Full Year	-5.1	7.1	6.4	1.6	
	3rd Quarter (total)	1.8	5.4	7.0	3.7	1.5
	Interim (total)	-0.7	4.6	7.2	5.5	0.9
	1st Quarter	3.0	4.4	6.4	6.9	0.2
Earnings Per Share (yen)	Full Year	-102.29	136.67	129.71	28.62	
	3rd Quarter (total)	26.27	75.59	104.98	51.55	16.99
	Interim (total)	-6.56	42.40	70.93	55.19	6.67
	1st Quarter	13.78	19.89	30.40	33.22	0.56
Cash Dividends per Share (yen)	Full Year		10	15	20	
Dividend Payout Ratio (%)	Full Year		7.32	11.56	69.87	
Free Cash Flow (millions of yen)	Full Year	35,778	10,311	46,199	17,394	