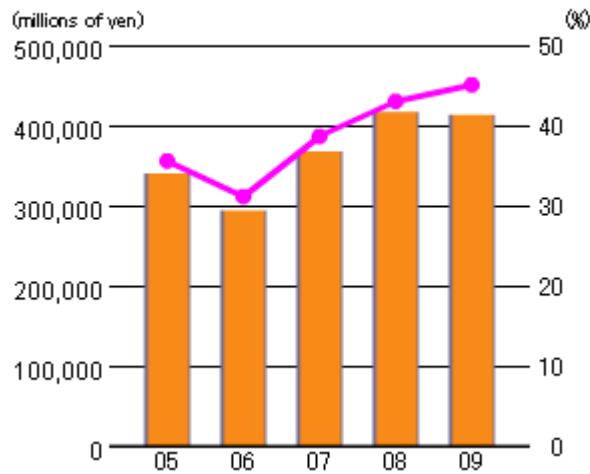
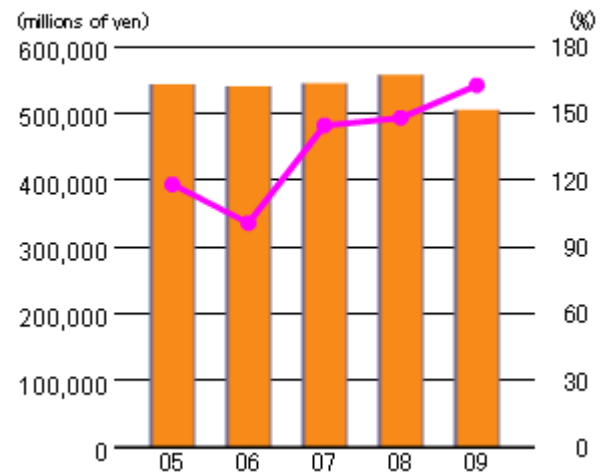


STABILITY

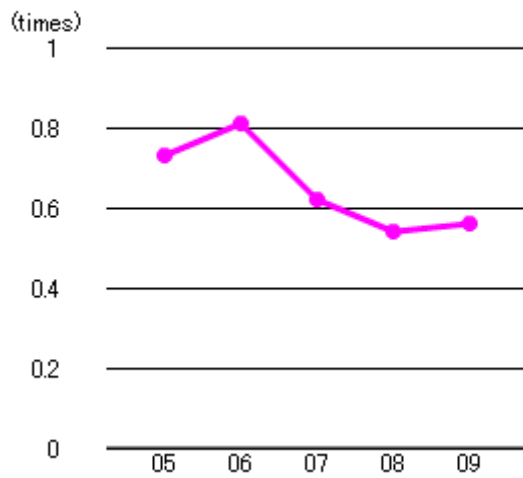
Equity & Equity Ratio



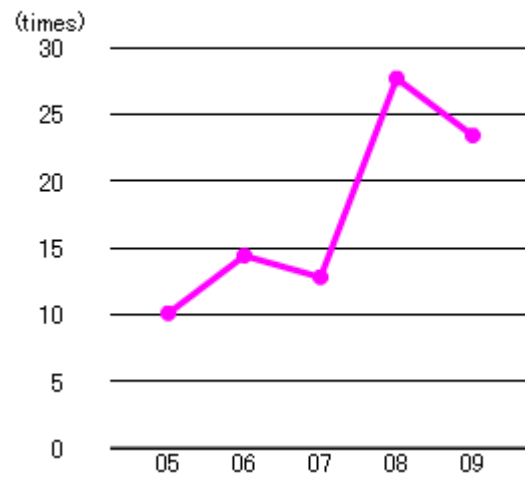
Current Assets & Current Ratio



Debt/Equity Ratio



Interest Coverage Ratio



STABILITY

		2005/3	2006/3	2007/3	2008/3	2009/3
Equity (millions of yen)	Full Year	339,730	293,817	367,468	417,166	413,381
Equity Ratio (%)	Full Year	35.55	31.12	38.64	42.98	45.03
Current Assets (millions of yen)	Full Year	542,728	540,152	544,237	557,111	504,920
Current Ratio (%)	Full Year	117.97	100.48	144.33	147.80	162.41
Debt/Equity Ratio (times)	Full Year	0.73	0.81	0.62	0.54	0.56
Interest Coverage Ratio (times)	Full Year	10.08	14.40	12.78	27.68	23.40