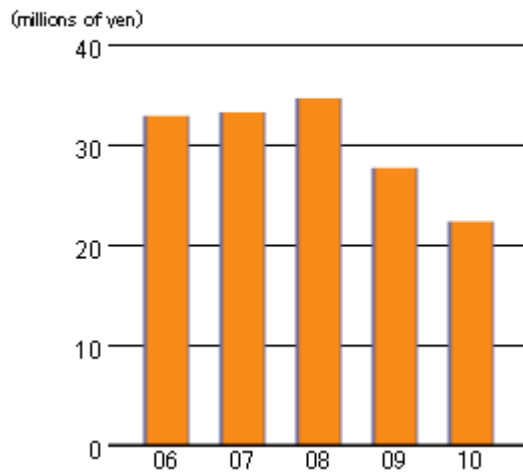
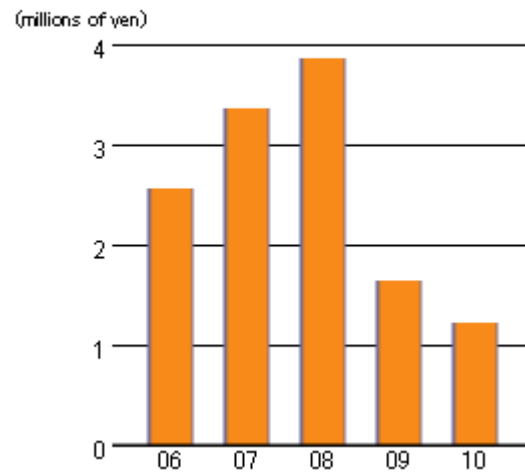


## PRODUCTIVITY

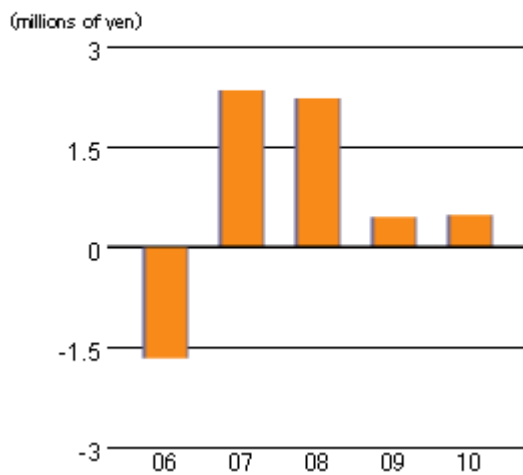
### Net Sales per Employee



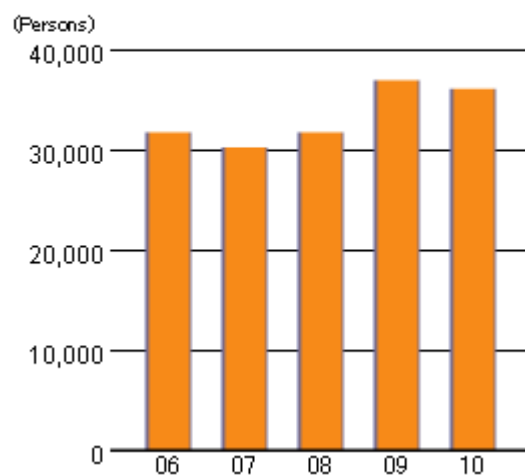
### Operating Income per Employee



### Net Income per Employee



### Number of Employee at Year-End



## PRODUCTIVITY

		2006/3	2007/3	2008/3	2009/3	2010/3
<b>Net Sales per Employee (millions of yen)</b>	<b>Full Year</b>	32.84	33.21	34.61	27.64	22.32
<b>Operating Income per Employee (millions of yen)</b>	<b>Full Year</b>	2.56	3.36	3.86	1.64	1.22
<b>Net Income per Employee (millions of yen)</b>	<b>Full Year</b>	-1.67	2.34	2.22	0.44	0.47
<b>Number of Employee at Year-End (persons)</b>	<b>Full Year</b>	31,685	30,207	31,717	36,876	36,048